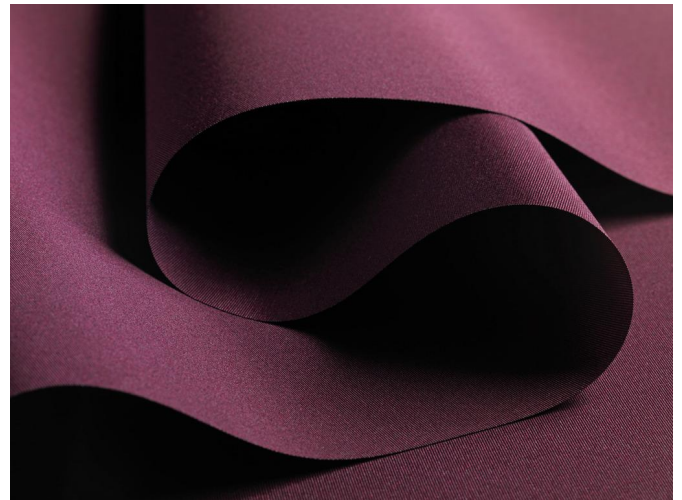


MULTI SHADOW

- Elegant Trevira CS textil
- Särskilt lämpad för digitaltryck
- Öko-Tex® Standard 100 certifierad. Fri från skadliga kemikalier

ANVÄNDNING



BETECKNINGAR FÖR VÄVNING

 Semimörkläggning

 Polyester Trevira CS

 170 g/m²

 0.35 mm

 ← max. → 235 cm

 8.9 cm, 12.7 cm, 240 cm

TEKNISKA EGENSKAPER

 6-7

 Flamskyddsmedel

 Användbar i fuktiga områden

 Digital utskrift

 Oeko-Tex

 Laserskärning

 Särskilda färger från 500 m

TVÄTTRÅD



FLAMSKYDDSMEDEL

B-s1,d0 (EN 13501-1)

B1 (DIN 4102-1)

M1 (NF P 92-503/5/7)

Type C (BS 5867-2)

NFPA 701



Multi Shadow

 OPTISKA KOEFFICIENTER OCH SOLKOEFFICIENTER ($\pm 5\%$, DIN EN 410)


Kulör	T_V	T_S	R_S	A_S	T_{UV}	F_C	g_{tot}
07	24.0	29.0	52.0	19.0	15.0	0.61	0.44
09	22.0	29.0	52.0	19.0	11.0	0.61	0.44
10	37.0	37.0	61.0	2.0	36.0	0.56	0.40
11	4.0	22.0	41.0	37.0	6.0	0.67	0.49
16	8.0	24.0	41.0	35.0	9.0	0.58	0.44
17	18.0	25.0	46.0	29.0	3.0	0.65	0.47
21	3.0	21.0	34.0	45.0	3.0	0.72	0.52
25	13.0	25.0	46.0	29.0	8.0	0.65	0.46
26	1.0	18.0	33.0	49.0	1.0	0.73	0.51
28	36.0	35.0	59.0	6.0	21.0	0.58	0.41
33	0.5	17.0	29.0	54.0	0.10	0.75	0.53
34	3.0	20.0	36.0	44.0	2.0	0.71	0.50
35	1.0	18.0	31.0	51.0	1.0	0.74	0.52

T_V Visible light transmission

R_S Solar reflectance

T_{UV} UV transmission

g_{tot} Total g-value

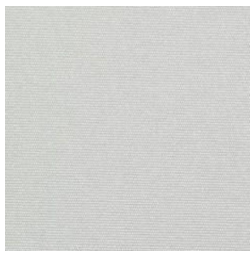
T_S Solar transmission

A_S Solar absorption

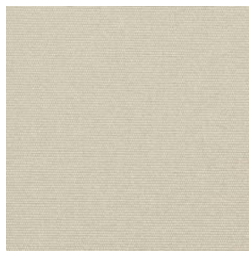
F_C Shading factor

 F_C + g_{tot}: Värde beräknat med glas: 0.72 / U_g = 1.6 W/m² K, DIN EN 13363-1

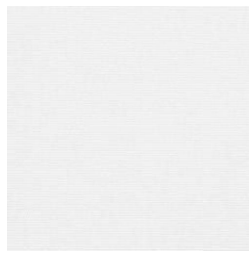
Multi Shadow



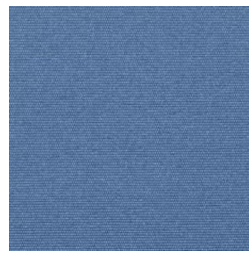
07



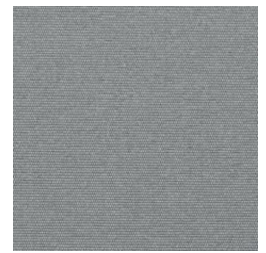
09



10



11



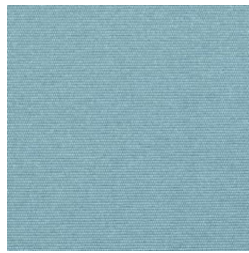
16



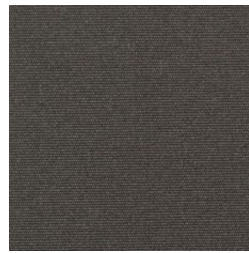
17



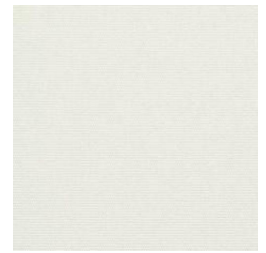
21



25



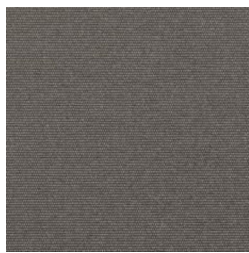
26



28



33



34



35

De färger som visas är inte bindande