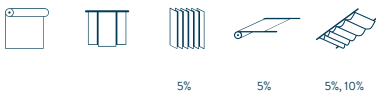







## MULTISCREEN 1%, 5%, 10%

- Screentextil, utmärkt för reducering av ljus och bländning
- Textilen finns i tre olika öppningsfaktorer. Textilen fungerar till alla typer av miljörer
- Greenguard®-certifierad

### ANVÄNDNING



### BETECKNINGAR FÖR VÄVNING

	1%	5%	10%
	Semitransparent		
	64 % PVC, 36 % glasfiber		
	440 g/m <sup>2</sup>	410 g/m <sup>2</sup>	350 g/m <sup>2</sup>
	0.55 mm	0.55 mm	0.47 mm
	245 cm	245 cm	315 cm
	250 cm	8.9 cm, 12.7 cm, 250 cm	320 cm

### TVÄTTRÅD



### TEKNISKA EGENSKAPER

	7-8
	Flamskyddsmedel
	Optimerad för arbetsstationer
	Olika faktorer för öppenhet
	Användbar i fuktiga områden
	Digital utskrift
	Greenguard
	Särskilda färger från 10'000 m
	Svetsbar

### FLAMSKYDDSMEDEL

C-s3,d0 (EN 13501-1)  
 Class 1 (BS 476)  
 Class 1 (UNI 9176/77)  
 B1 (DIN 4102-1)  
 M1 (NF P 92-503/5/7)  
 Type B (BS 5867-2)  
 NFPA 701



Multiscreen 1%, 5%, 10%

OPTISKA KOEFFICIENTER OCH SOLKOEFFICIENTER ( $\pm 5\%$ , DIN EN 410) ⤴

Multiscreen 1%							
Kulör	$T_V$	$T_S$	$R_S$	$A_S$	$T_{UV}$	$F_C$	$g_{tot}$
0702	11.8	14.0	47.0	39.0	0.00	0.64	0.46
0730	5.6	6.0	25.0	69.0	0.01	0.79	0.57
3001	2.8	3.0	9.0	88.0	0.01	0.89	0.64

Multiscreen 5%							
Kulör	$T_V$	$T_S$	$R_S$	$A_S$	$T_{UV}$	$F_C$	$g_{tot}$
0202	20.6	21.0	69.0	10.0	0.05	0.50	0.36
0207	15.8	17.0	54.0	29.0	0.05	0.60	0.42
0220	19.1	22.0	62.0	16.0	0.06	0.54	0.39
0707	12.7	15.0	37.0	48.0	0.06	0.71	0.50
3001	5.6	6.0	10.0	84.0	0.05	0.89	0.62
3006	5.3	5.0	7.0	88.0	0.06	0.89	0.63
3030	5.4	6.0	5.0	89.0	0.04	0.89	0.64

Multiscreen 10%							
Kulör	$T_V$	$T_S$	$R_S$	$A_S$	$T_{UV}$	$F_C$	$g_{tot}$
0202	28.7	29.0	63.0	8.0	0.11	0.54	0.39
0207	23.2	25.0	53.0	22.0	0.11	0.61	0.44
0220	26.4	29.0	58.0	13.0	0.10	0.57	0.41
0707	18.3	21.0	34.0	45.0	0.11	0.74	0.53
3001	10.2	10.0	10.0	80.0	0.10	0.89	0.64
3006	9.3	10.0	6.0	84.0	0.12	0.89	0.64
3030	10.8	10.0	5.0	85.0	0.10	0.89	0.64

$T_V$  Visible light transmission

$R_S$  Solar reflectance

$T_{UV}$  UV transmission

$g_{tot}$  Total g-value

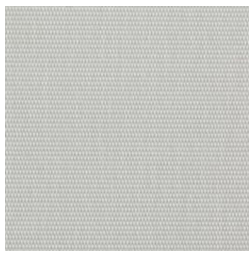
$T_S$  Solar transmission

$A_S$  Solar absorption

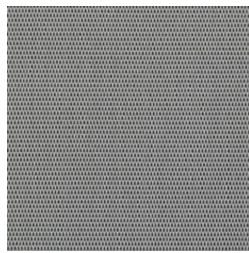
$F_C$  Shading factor

$F_C + g_{tot}$ : Värde beräknat med glas:  $0.72 / U_g = 1.6 \text{ W/m}^2 \text{ K}$ , DIN EN 13363-1

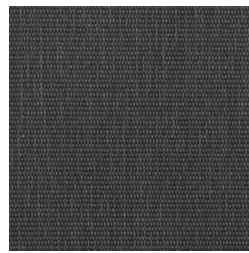
## Multiscreen 1%, 5%, 10%



0702 (1%)



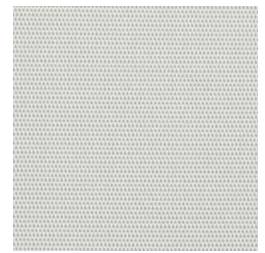
0730 (1%)



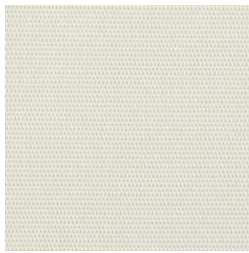
3001 (1%)



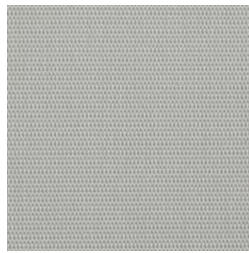
0202 (5%)



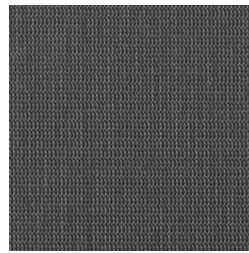
0207 (5%)



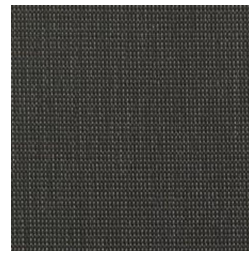
0220 (5%)



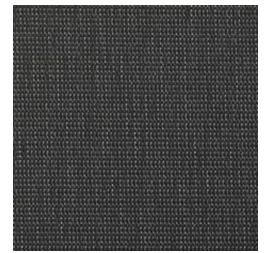
0707 (5%)



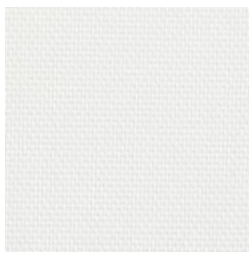
3001 (5%)



3006 (5%)



3030 (5%)



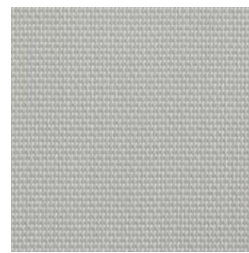
0202 (10%)



0207 (10%)



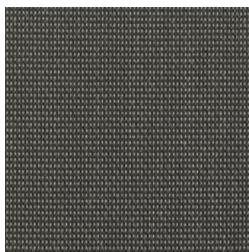
0220 (10%)



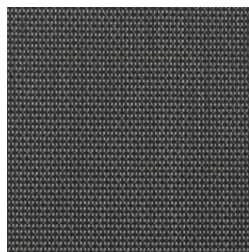
0707 (10%)



3001 (10%)



3006 (10%)



3030 (10%)

De färger som visas är inte bindande